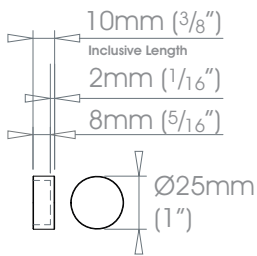
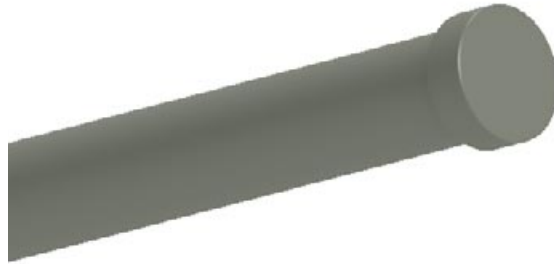


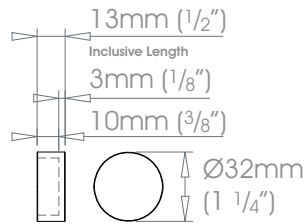
# SIMPLE Finials • Stud

**Finishes** Alabaster • Dusk • Granite • Slate • Flint • Barley • Dove • Millstone • Clay • Cocoa • Cloud • Ceramic • Bone • Cream • Parchment • Damson • Moss • Smoke • Frame Grey • Raven Coat Options: Matte (M) • Satin (S) • Gloss (G) • Platinum • Champagne • Gold • Cognac • Gunmetal • Antique Brass • Pewter • Bronzed Coat Options: Satin (S) • Gloss (G)  
 Polished Nickel - Can be specified at twice the cost of the standard finish  
**Custom Finishes** Can be specified subject to a per colour upcharge. (up to five poles)



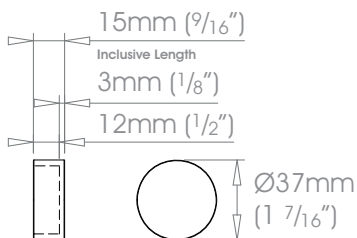
**19mm (3/4") Stud**

**W** Weight 16g (1oz)



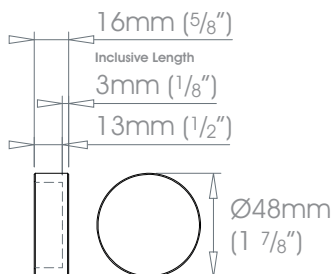
**25mm (1") Stud**

**W** Weight 38g (1oz)



**30mm (1 3/16") Stud**

**W** Weight 51g (2oz)

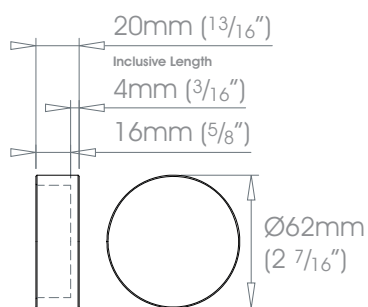
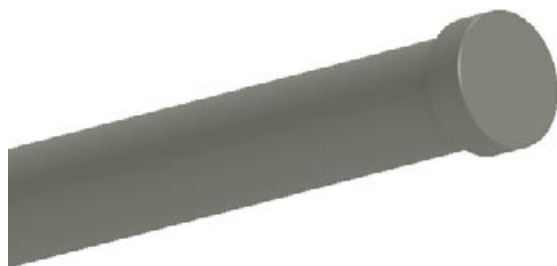


**38mm (1 1/2") Stud**


**W** Weight 100g (4oz)

# SIMPLE Finials • Stud

**Finishes** Alabaster • Dusk • Granite • Slate • Flint • Barley • Dove • Millstone • Clay • Cocoa • Cloud • Ceramic • Bone • Cream • Parchment • Damson • Moss • Smoke • Frame Grey • Raven Coat Options: Matte (M) • Satin (S) • Gloss (G) • Platinum • Champagne • Gold • Cognac • Gunmetal • Antique Brass • Pewter • Bronzed Coat Options: Satin (S) • Gloss (G)  
Polished Nickel - Can be specified at twice the cost of the standard finish  
**Custom Finishes** Can be specified subject to a per colour upcharge, (up to five poles)



## 50mm (2") Stud

 Weight 198g (7oz)