

CONTACT

www.bradleycollection.com



UK & REST OF THE WORLD

☎ +44 (0)1449 722 724

✉ info@bradleycollection.com

USA & CANADA

☎ +1 (310) 815 8255

✉ info.us@bradleycollection.com



MIO

the**bradley**collection

Specialised fixings for mounting brackets will be required in certain situations and are not provided as standard. Steel items are not recommended for damp conditions such as shower rooms. Crystal finials and acrylic poles should not be positioned in direct sunlight, and are not suitable for use in conservatories. Brass items are supplied unlacquered and will tarnish over time.

The Bradley Collection reserves the right to modify design and materials without prior notice as part of a process of continual product improvement. Due to printing limitations, colours in this brochure may not be accurate.

Products are protected by Design Rights, under provisions of Copyright, Designs & Patents Act 1988. Bradley®, The Bradley Collection® and  Logo are registered Community trademarks of The Bradley Collection Ltd. in Europe and registered trademarks of the Bradley Collection, Inc. in the USA.

The Bradley Collection Ltd Lion Barn • Mailford Road • Needham Market • Suffolk • IP6 8NS • UK

Printed: 0821 • Copyright © The Bradley Collection Ltd. 2021



MIO

MIO

The sharp, modern form of the Mio Collection flows from its purposeful design intent and the use of laser technology in its production.

The precision styling can be accentuated by the industrial, brushed stainless finish or can be softened with contemporary coated finishes.

Pictured: ø50mm (2") Pole • Stud • Brushed Stainless

Interior design: Bayon Design Studio Inc - California - USA

MIO

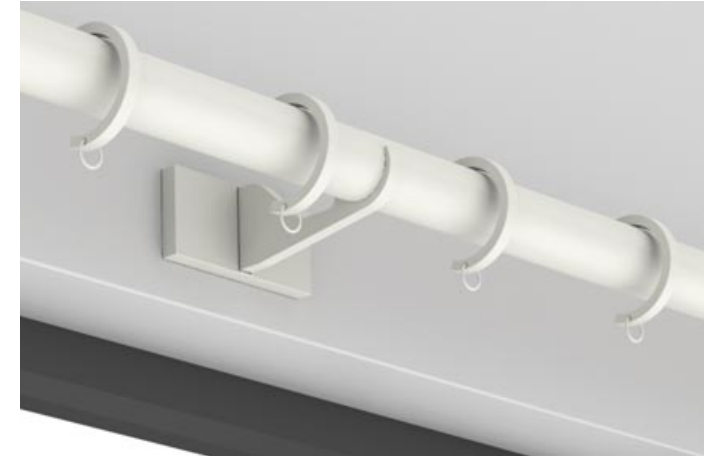
CLEAN LINES

The distinct aesthetic is achieved by utilising the latest technology, from CNC lathes & mills to laser cutting. This ensures a crisp edge and an accurate fit.



LENGTH

Poles can be cut to any length.Ⓒ On longer systems, the use of passing brackets & rings will allow uninterrupted travel of the drapes along the full length of the system.



ACRYLIC*

For the ultimate luxury statement, the tones & finishes of Mio can be paired with a solid acrylic pole.



SCALE

Mio offers the widest choice of finish & scale for your interior. From soft matte hues & rich metal finishes to engineered, Brushed Stainless and all available in five pole diameters. Ø19mm (3/4") • 25mm (1") • 30mm (1 1/4") • 38mm (1 1/2") • 50mm (2").



FUNCTION

A range of bracket options have been designed to allow easy installation. Brackets have magnetic cover plates to hide fixings. Brackets can also be supplied to custom lengths and designs.



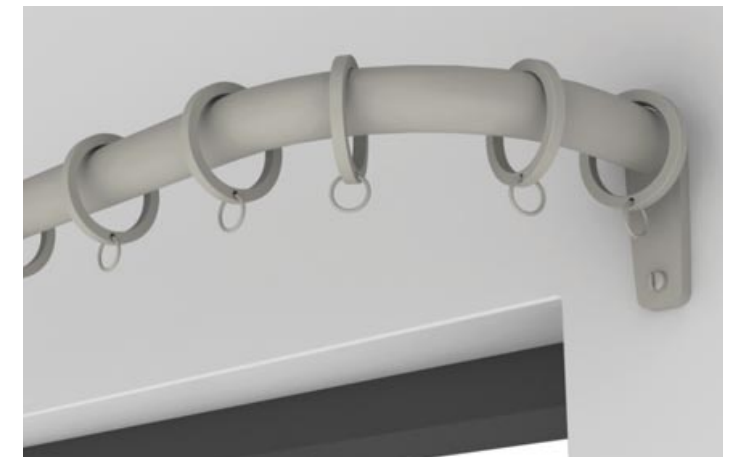
BENT TO SHAPE

A bespoke bay bending and curving service is available on all diameters, to allow the perfect shaped pole for any window.



FRENCH POLES

The traditional French pole re-styled for modern living, with understated bracket design and lined rings.

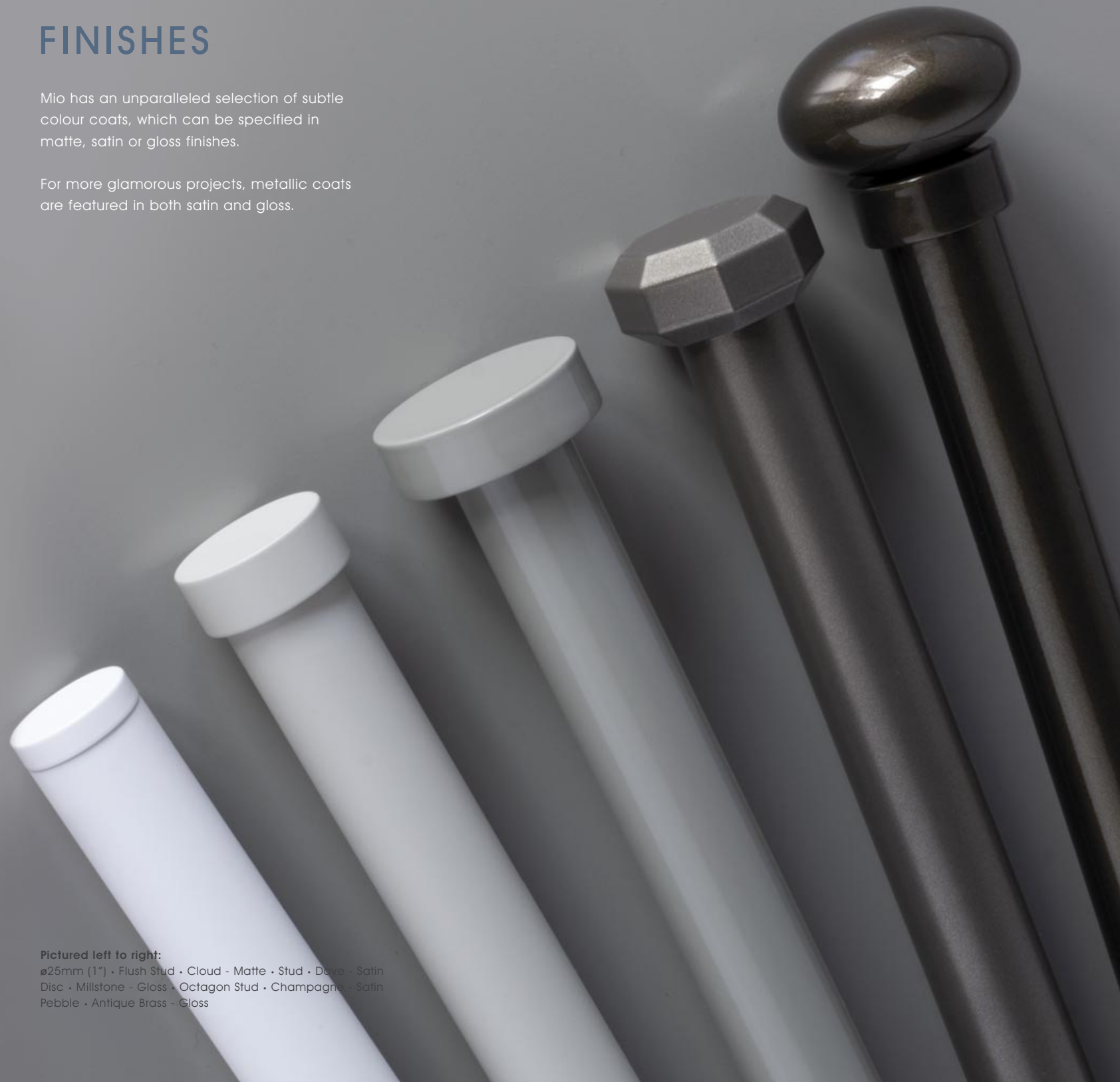


Ⓒ Supplied in sections - Maximum section per length 4.0m (157") - Section lengths over 2.4m (94") will incur a handling charge
* Acrylic poles should not be positioned in direct sunlight, and are not suitable for use in conservatories or outdoors

FINISHES

Mio has an unparalleled selection of subtle colour coats, which can be specified in matte, satin or gloss finishes.

For more glamorous projects, metallic coats are featured in both satin and gloss.



Pictured left to right:
 ø25mm (1") - Flush Stud - Cloud - Matte - Stud - Dove - Satin
 Disc - Millstone - Gloss - Octagon Stud - Champagne - Satin
 Pebble - Antique Brass - Gloss

Coat Options



Cloud M S G	Barley M S G	Bone M S G	Cream M S G	Parchment M S G
Mineral M S G	Dove M S G	Millstone M S G	Clay M S G	Cocoa M S G
Alabaster M S G	Dusk M S G	Ceramic M S G	Slate M S G	Flint M S G
Damson M S G	Moss M S G	Smoke M S G	Frame Grey M S G	Raven M S G
Platinum S G	Champagne S G	Gold S G	Cognac S G	Gunmetal S G
Pewter S G	Antique Brass S G	Bronzed S G	Natural Silver	

Due to printing limitations colours in this brochure may not be accurate
 Samples are available on request - www.bradleycollection.com/samples/



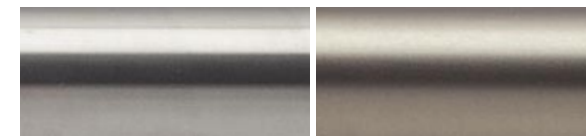
Pictured left to right:
 ø25mm (1") • Large Disc • Polished Brass Plate • Stud • Polished Nickel
 Octagon Stud • Brushed Brass Tint • Squat Disc • Brushed Stainless
 Faceted Disc • Brushed Carbon Tint • Ball • Brushed Bronze Tint

FINISHES

Mio also offers a selection of more specialised options, including brushed finishes on authentic stainless steel.

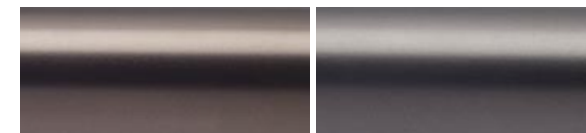
STAINLESS

Brushed stainless steel, self-coloured or in subtle tinted hues gives an industrial aesthetic.



Brushed Stainless ⊕⊕⊖

Brass Tint ⊕⊕⊖



Bronze Tint ⊕⊕⊖

Carbon Tint ⊕⊕⊖

PLATED

Polished plated finishes provide a traditional sense of luxury.



Polished Nickel ⊕⊖

Polished Brass Plate ⊕⊖

Due to printing limitations colours in this brochure may not be accurate
 Samples are available on request - www.bradleycollection.com/samples/

⊕ A finishing charge will apply ⊖ Longer lead-times will apply ⊖ Not available with French poles options

FINISHES



MIO

Pictured: ø38mm (1 1/2") Pole • Squat Disc • Old Pewter
 ø50mm (2") Acrylic Pole • Stud • Polished Nickel
 ø50mm (2") Acrylic Pole • Faceted Disc • Brushed Brass Tint

FLUID METAL™

Exciting new finishing technology for Mio enables a richness and rarity of finish not previously possible on a steel-based product.



Old Silver ⊕⊕⊕✎ Old Pewter ⊕⊕⊕✎ Old Brass ⊕⊕⊕✎ Light Bronze ⊕⊕⊕✎ Bronze Art ⊕⊕⊕✎

⊕ A finishing charge will apply ⊕ Longer lead-times will apply
 ⊕ Fluid Metal finishes are supplied unlaquered and will tarnish over time, a clear lacquer may be applied on request as a custom finish ✎ Fluid Metal finishes are hand produced, finish may vary.
 Due to printing limitations colours in this brochure may not be accurate. Samples are available on request - www.bradleycollection.com/samples/

ACRYLIC POLES

Transparent acrylic poles may be teamed with components in any of the Mio finishes.



Clear Acrylic Pole ✎

✎ Acrylic poles should not be positioned in direct sunlight, and are not suitable for use in conservatories or outdoors

FINIALS

Mio – Simplicity of design and purity of form.



Pictured left to right:
 ø38mm (1 1/2") • Pebble • Moss - Matte
 ø19mm (3/4") • Flush Stud • Frame Grey - Matte
 ø50mm (2") • Crystal Ball • Damson - Matte
 ø25mm (1") • Ball • Smoke - Matte
 ø30mm (1 1/16") • Large Disc • Raven - Matte



Flush Stud

- ø19mm (3/4") Inclusive Length 6mm (1/4")
- ø25mm (1") Inclusive Length 6mm (1/4")
- ø30mm (1 3/16") Inclusive Length 6mm (1/4")
- ø38mm (1 1/2") Inclusive Length 8mm (5/16")
- ø50mm (2") Inclusive Length 8mm (5/16")



Stud

- ø19mm (3/4") Inclusive Length 2mm (1/16")
- ø25mm (1") Inclusive Length 3mm (1/8")
- ø30mm (1 3/16") Inclusive Length 3mm (1/8")
- ø38mm (1 1/2") Inclusive Length 3mm (1/8")
- ø50mm (2") Inclusive Length 4mm (3/16")



Disc

- ø19mm (3/4") Inclusive Length 2mm (1/16")
- ø25mm (1") Inclusive Length 3mm (1/8")
- ø30mm (1 3/16") Inclusive Length 3mm (1/8")
- ø38mm (1 1/2") Inclusive Length 3mm (1/8")
- ø50mm (2") Inclusive Length 4mm (3/16")



Large Disc

- ø19mm (3/4") Inclusive Length 4mm (3/16")
- ø25mm (1") Inclusive Length 4mm (3/16")
- ø30mm (1 3/16") Inclusive Length 4mm (3/16")
- ø38mm (1 1/2") Inclusive Length 6mm (1/4")
- ø50mm (2") Inclusive Length 6mm (1/4")



Octagon Stud

- ø19mm (3/4") Inclusive Length 7mm (1/4")
- ø25mm (1") Inclusive Length 10mm (3/8")
- ø30mm (1 3/16") Inclusive Length 10mm (3/8")
- ø38mm (1 1/2") Inclusive Length 11mm (7/16")
- ø50mm (2") Inclusive Length 14mm (9/16")



Squat Disc

- ø19mm (3/4") Inclusive Length 17mm (11/16")
- ø25mm (1") Inclusive Length 23mm (7/8")
- ø30mm (1 3/16") Inclusive Length 23mm (7/8")
- ø38mm (1 1/2") Inclusive Length 33mm (1 5/16")
- ø50mm (2") Inclusive Length 44mm (1 3/4")



Ball

- ø19mm (3/4") Inclusive Length 50mm (2")
- ø25mm (1") Inclusive Length 63mm (2 1/2")
- ø30mm (1 3/16") Inclusive Length 62mm (2 7/16")
- ø38mm (1 1/2") Inclusive Length 83mm (3 1/4")
- ø50mm (2") Inclusive Length 104mm (4 1/16")



Cut Crystal Ball*

- ø19mm (3/4") Inclusive Length 55mm (3 3/16")
- ø25mm (1") Inclusive Length 66mm (2 5/8")
- ø30mm (1 3/16") Inclusive Length 66mm (2 5/8")
- ø38mm (1 1/2") Inclusive Length 85mm (3 3/8")
- ø50mm (2") Inclusive Length 108mm (4 1/4")



Faceted Disc

- ø19mm (3/4") Inclusive Length 21mm (13/16")
- ø25mm (1") Inclusive Length 28mm (1 1/8")
- ø30mm (1 3/16") Inclusive Length 28mm (1 1/8")
- ø38mm (1 1/2") Inclusive Length 41mm (1 5/8")
- ø50mm (2") Inclusive Length 54mm (2 1/8")



Pebble

- ø19mm (3/4") Inclusive Length 25mm (1")
- ø25mm (1") Inclusive Length 34mm (1 5/16")
- ø30mm (1 3/16") Inclusive Length 39mm (1 9/16")
- ø38mm (1 1/2") Inclusive Length 50mm (1 15/16")
- ø50mm (2") Inclusive Length 66mm (2 9/16")



Crystal Ball*

- ø19mm (3/4") Inclusive Length 55mm (3 3/16")
- ø25mm (1") Inclusive Length 66mm (2 5/8")
- ø30mm (1 3/16") Inclusive Length 66mm (2 5/8")
- ø38mm (1 1/2") Inclusive Length 85mm (3 3/8")
- ø50mm (2") Inclusive Length 108mm (4 1/4")





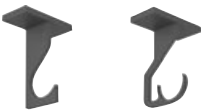
Crystal Element*

- ø30mm (1 3/16") Inclusive Length 87mm (3 7/16")
- ø50mm (2") Inclusive Length 126mm (4 9/16")


For full technical information, sizes and weights please download the specification guide - www.bradleycollection.com/specification-guides/

*: Crystal Finials should not be positioned in direct sunlight


SINGLE BRACKETS

Side	Diameter	Projection from wall to pole centre	Fixing plate size
	ø19mm (3/4") ø25mm (1") ø30mm (1 1/16") ø38mm (1 1/2") ø50mm (2")	60mm (2 3/8"), 100mm (4") 60mm (2 3/8"), 100mm (4") 100mm (4") 100mm (4") 100mm (4")	w34mm (1 5/16") x h70mm (2 3/4") w34mm (1 5/16") x h70mm (2 3/4") w34mm (1 5/16") x h70mm (2 3/4") w52mm (2 1/16") x h104mm (4 1/8") w52mm (2 1/16") x h104mm (4 1/8")
Mid Passing	Diameter	Projection from wall to pole centre	Fixing plate size
	ø19mm (3/4") ø25mm (1") ø30mm (1 1/16") ø38mm (1 1/2") ø50mm (2")	60mm (2 3/8"), 100mm (4") 60mm (2 3/8"), 100mm (4"), 140mm (5 1/2") [Ⓞ] 100mm (4") 100mm (4") 100mm (4")	w70mm (2 3/4") x h34mm (1 5/16") w70mm (2 3/4") x h34mm (1 5/16") w70mm (2 3/4") x h34mm (1 5/16") w104mm (4 1/8") x h52mm (2 1/16") w104mm (4 1/8") x h52mm (2 1/16")
Ceiling Passing	Diameter	Projection from wall to pole centre	Fixing plate size
	ø19mm (3/4") ø25mm (1") ø30mm (1 1/16") ø38mm (1 1/2") ø50mm (2")	60mm (2 3/8"), 100mm (4") 60mm (2 3/8"), 100mm (4") 100mm (4") 100mm (4") 100mm (4")	w70mm (2 3/4") x h34mm (1 5/16") w70mm (2 3/4") x h34mm (1 5/16") w70mm (2 3/4") x h34mm (1 5/16") w104mm (4 1/8") x h52mm (2 1/16") w104mm (4 1/8") x h52mm (2 1/16")

RECESS BRACKETS

Recess with ring stop	Diameter	Depth off wall	Fixing plate size
	ø19mm (3/4") ø25mm (1") ø30mm (1 1/16") ø38mm (1 1/2") ø50mm (2")	7mm (1/4") 8mm (5/16") 10mm (3/8") 12mm (1/2") 15mm (9/16")	ø26mm (1") ø34mm (1 5/16") ø40mm (1 7/16") ø49mm (1 13/16") ø64mm (2 1/2")



FRENCH BRACKETS

French - End [Ⓞ]	Diameter	Projection from wall to pole centre	Fixing plate size
	ø25mm (1")	100mm (4"), 140mm (5 1/2") [Ⓞ]	w26mm (1") x h80mm (3 1/8")

ADJUSTABLE BRACKETS





Side	Passing	Diameter	Projection from wall to pole centre	Fixing plate size
		ø19mm (3/4") ø25mm (1") ø30mm (1 1/16") ø38mm (1 1/2") ø50mm (2")	Min.60mm (2 3/8") Max.170mm (6 11/16") Min.60mm (2 3/8") Max.170mm (6 11/16") Min.100mm (4") Max.170mm (6 11/16") Min.100mm (4") Max.170mm (6 11/16") Min.100mm (4") Max.170mm (6 11/16")	w34mm (1 5/16") x h70mm (2 3/4") w34mm (1 5/16") x h70mm (2 3/4") w34mm (1 5/16") x h70mm (2 3/4") w52mm (2 1/16") x h104mm (4 1/8") w52mm (2 1/16") x h104mm (4 1/8")

DOUBLE BRACKETS

Side	Diameter	Projection from wall to pole centre	Fixing plate size	
	Fø25mm (1") Bø19mm (3/4") Fø38mm (1 1/2") Bø25mm (1")	F160mm (6 5/16") B60mm (2 3/8") F160mm (6 5/16") B60mm (2 3/8")	w34mm (1 5/16") x h70mm (2 3/4") w52mm (2 1/16") x h104mm (4 1/8")	
Mid Passing	Diameter	Projection from wall to pole centre	Mid fixing plate size	Passing fixing plate size
	Fø25mm (1") Bø19mm (3/4") Fø38mm (1 1/2") Bø25mm (1")	F160mm (6 5/16") B60mm (2 3/8") F160mm (6 5/16") B60mm (2 3/8")	w70mm (2 3/4") x h34mm (1 5/16") w104mm (4 1/8") x h52mm (2 1/16")	w72mm (2 13/16") x h59mm (2 5/16") w52mm (2 1/16") x h104mm (4 1/8")



CUSTOM BRACKETS

Mio can be customised to suit virtually any window.

			
Custom Projection Specify the exact projection needed.	Custom Fixing Plate Relevant where space is restricted or weight is a concern.	Uplift Helps negotiate cornice and similar architectural features.	Angled Brackets The solution for tight and awkward locations.

LINED RINGS

A smart, discreet nylon liner provides for smoother, quieter operation of drapes.

Ring	Passing Ring	Diameter	Ring drop from top of pole to bottom of ringlet
		ø19mm (¾")	44mm (1¾")
		ø25mm (1")	53mm (2⅛")
		ø30mm (1⅓")	53mm (2⅛")
		ø38mm (1½")	66mm (2⅝")
		ø50mm (2")	80mm (3⅛")

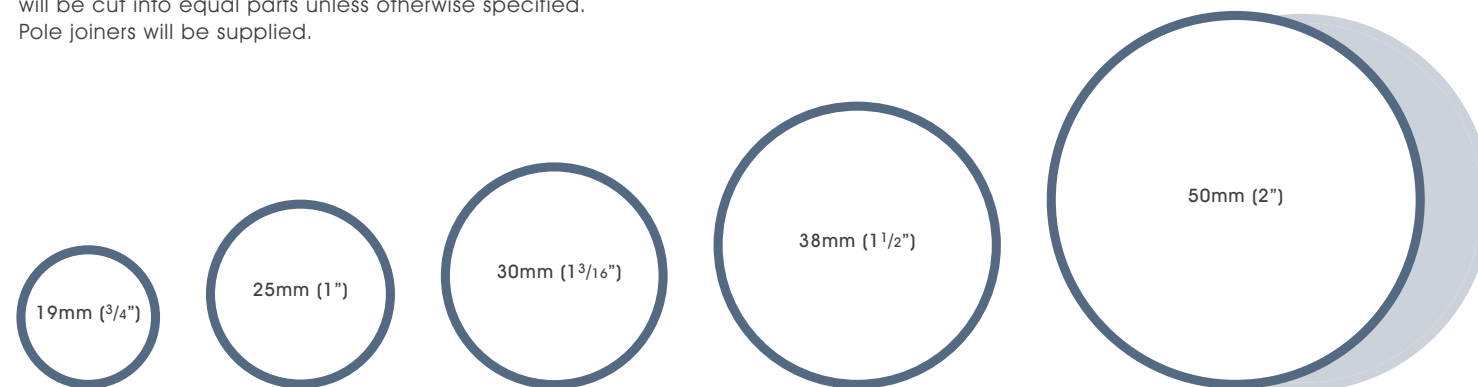
POLES

Poles are cut, bent and curved to suit individual requirements.

When calculating the length of your pole, remember to allow tolerance beyond the width of the frame for the curtains to draw back to the edge of the window.

Maximum pole length in one piece 4.0m (157").

Poles exceeding the recommended maximum distance between brackets, will be cut into equal parts unless otherwise specified. Pole joiners will be supplied.



Diameter	Recommended maximum distance between brackets	Recommended curtain type for pole diameter	Minimum bend radius	French Pole bend radius
ø19mm (¾")	1800mm (71")	Light to medium weight, lined & non interlined curtains	R75mm (3")	n/a
ø25mm (1")	2000mm (79")	Medium weight, lined & interlined curtains	R100mm (4")	R50mm (2")
ø30mm (1⅓")	2100mm (83")	Medium weight, lined & interlined curtains	R255mm (10")	n/a
ø38mm (1½")	2200mm (87")	Medium to heavy weight, lined & interlined curtains	R255mm (10")	n/a
ø50mm (2")	2400mm (96")	Heavy weight interlined curtains	R255mm (10")	n/a
ø50mm (2") Acrylic pole*	1500mm (59")	Medium weight, lined & interlined curtains	R200mm (8")	n/a

© Section lengths over 2.4m (94") will incur a handling charge. *: Acrylic poles should not be positioned in direct sunlight, and are not suitable for use in conservatories or outdoors. For full technical information, sizes and weights please download the specification guide - www.bradleycollection.com/specification-guides/

ACCESSORIES

Ombres

Small



Internal projection from wall: 150mm (5⅞")
Fixing plate size: ø19mm (¾")

Large



Internal projection from wall: 150mm (5⅞")
Fixing plate size: ø25mm (1")

Hold back



Internal measurement: 137mm (5⅜")
Fixing plate size: ø44mm (1¾")

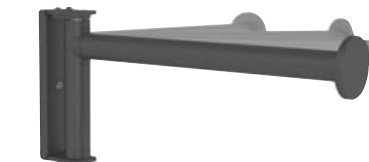
Tie Back Hook



Projection: 29mm (1⅛")
Fixing plate size: w25mm (1") x h74mm (2⅝")

Drapery Arm

Drapery arms have been designed to work at dormer windows, doorways & above beds.



Diameter: ø25mm (1")
Fixing plate size: w34mm (1⅝") x h156mm (6⅛")

Draw Rods®

Fine



Standard



Draw rod length:
1000mm (39⅝")
Custom lengths available to order

© Not recommended for use with passing rings.