

# CONTACT

www.bradleycollection.com



## UK & REST OF THE WORLD

+44 (0)1449 722 724

info@bradleycollection.com

## USA & CANADA

+1 (310) 815 8255

info.us@bradleycollection.com

## LONDON SHOWROOM

+44 (0)207 871 7793

showroom@studiotwochelsea.com

THE **BRADLEY**  
COLLECTION



CEDIA  
MEMBER

Specialised fixings for mounting brackets will be required in certain situations and are not provided as standard.  
Steel items are not recommended for damp conditions such as shower rooms.  
Crystal finials should not be positioned in direct sunlight, and are not suitable for use in conservatories.  
Fluid Metal items are supplied unlacquered and will tarnish over time.

The Bradley Collection reserves the right to modify design and materials without prior notice as part of a process of continual product improvement. Due to printing limitations, colours in this brochure may not be accurate.

Products are protected by Design Rights, under provisions of Copyright, Designs & Patents Act 1988.  
Bradley®, The Bradley Collection® and  Logo are registered Community trademarks of The Bradley Collection Ltd. in Europe and registered trademarks of the Bradley Collection, Inc. in the USA.

**The Bradley Collection Ltd** Lion Barn • Maitland Road • Needham Market • Suffolk • IP6 8NS • UK

Printed: 1023 • Copyright © The Bradley Collection Ltd. 2023

GLIDERPOLE®

9 | THE **BRADLEY**  
COLLECTION



# GLIDERPOLE®

This sophisticated collection is the epitome of modern living. The design is sharp, streamlined and purposeful, whilst the choice of colour and finish ensures a truly individual result.

**Pictured:** Round Ø50mm (2") Gliderpole® - Corded • Flush End Cap • Gold - Gloss  
**Interior styling & decoration:** Dilly Orme | @dillyorme  
**Photography:** David Parmiter | @davidparmiterphotography

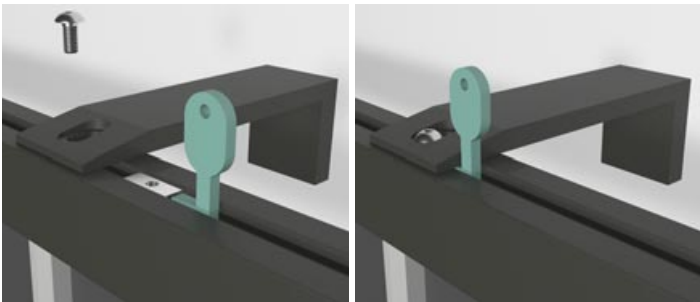


# GLIDERPOLE®

## EASIER INSTALLATION

Locating grub screws into the top fixing plate is made easy with the new T-bar guide. A simple complimentary tool is now supplied with each Gliderpole order, which perfectly indexes the tapped hole and the grub screw.

An invaluable improvement in the fitting experience, especially when installing with no line of sight.



## HAND DRAWN

The smooth running hand drawn option is available in five styles; Square • Flat • Ø23mm (15/16”) • 30mm (13/16”) • 50mm (2”). All benefit from the new thoughtful detailing of concealed end stops.



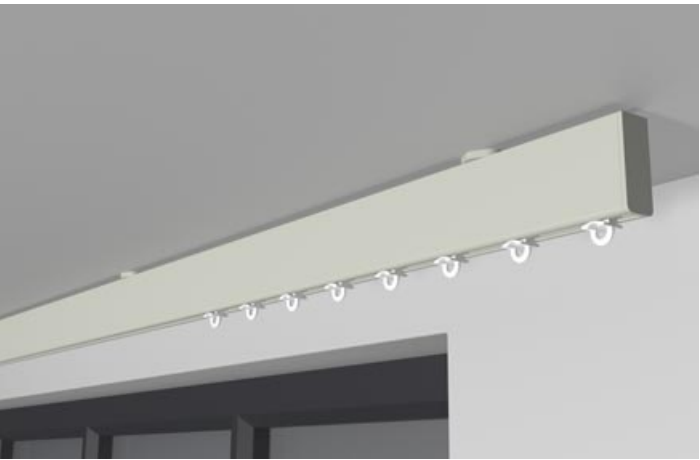
## CORDED

The innovative, embedded cording solution is available in three options, Square • Ø30mm (13/16”) • 50mm (2”). All options allow a single or a twin cord which sit discreetly behind the curtain. A colour coordinated metal cord retainer is supplied as standard, for child safety.



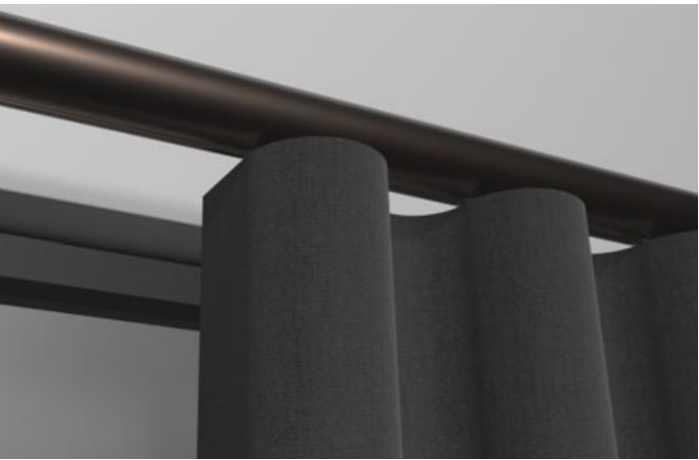
## LENGTH

Gliderpole can be supplied to any length<sup>©</sup> allowing the curtains to travel freely across even the longest systems.



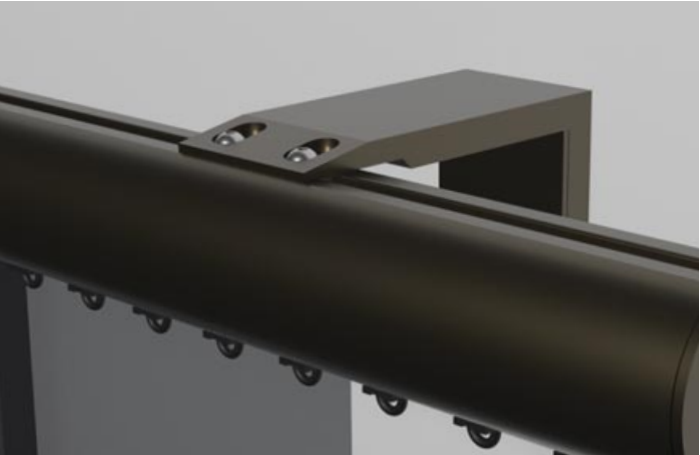
## WAVE®

The ubiquitous Wave® heading is accommodated through all Gliderpole options.



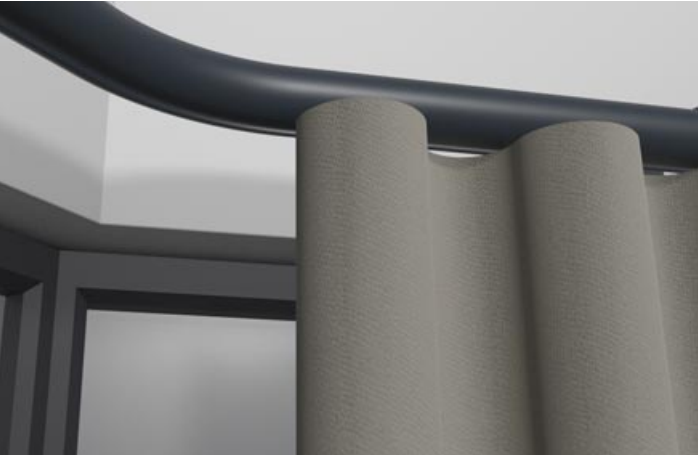
## HEAVY DUTY

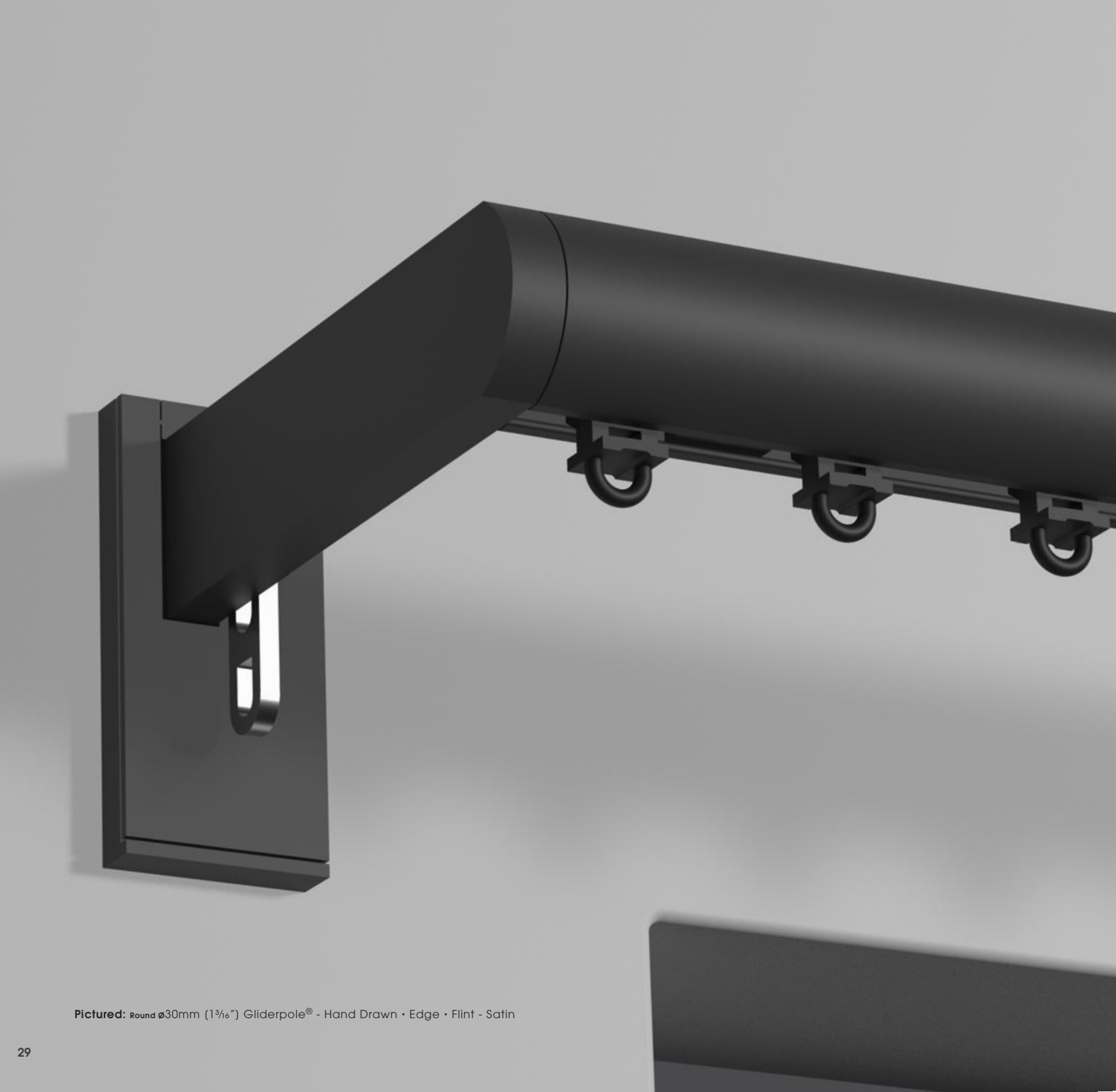
Heavy Duty face fixed brackets and improved adjustable brackets have been added to allow easy installation even in challenging situations. Wall brackets have a magnetic cover plate for hidden fixings. Brackets can also be supplied to custom lengths and designs.



## BENT TO SHAPE

Gliderpole is the optimal solution for bends and curves. Precision bending and smooth running gliding systems combine to provide superb functionality.





**Pictured:** Round Ø30mm (1<sup>3</sup>/<sub>16</sub>" ) Gliderpole® - Hand Drawn • Edge • Flint - Satin

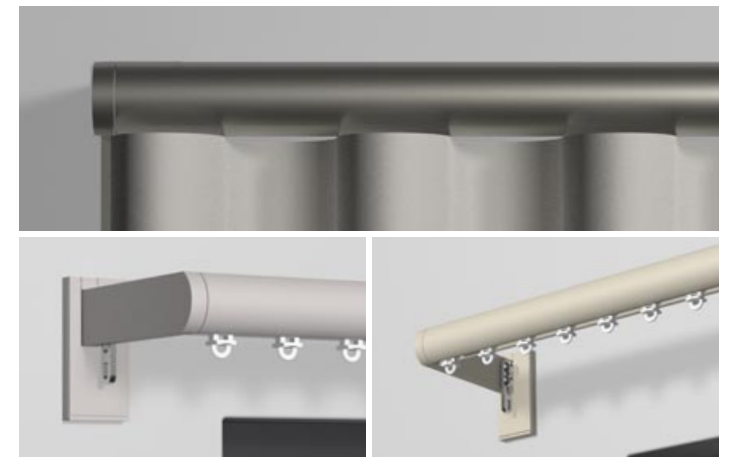
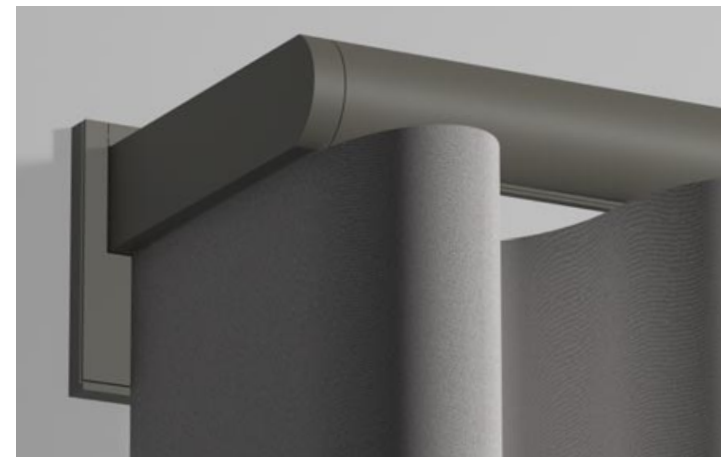
# GLIDERPOLE®

## EDGE

Gliderpole Edge is a modern, clean cut, return-to-wall concept with a more linear aesthetic.

The unique Edge bracket design gives a structured return to the wall for drapes and incorporates an adjustable return-to-wall hook eye.

Available in Ø30mm (1<sup>3</sup>/<sub>16</sub>" ) hand drawn

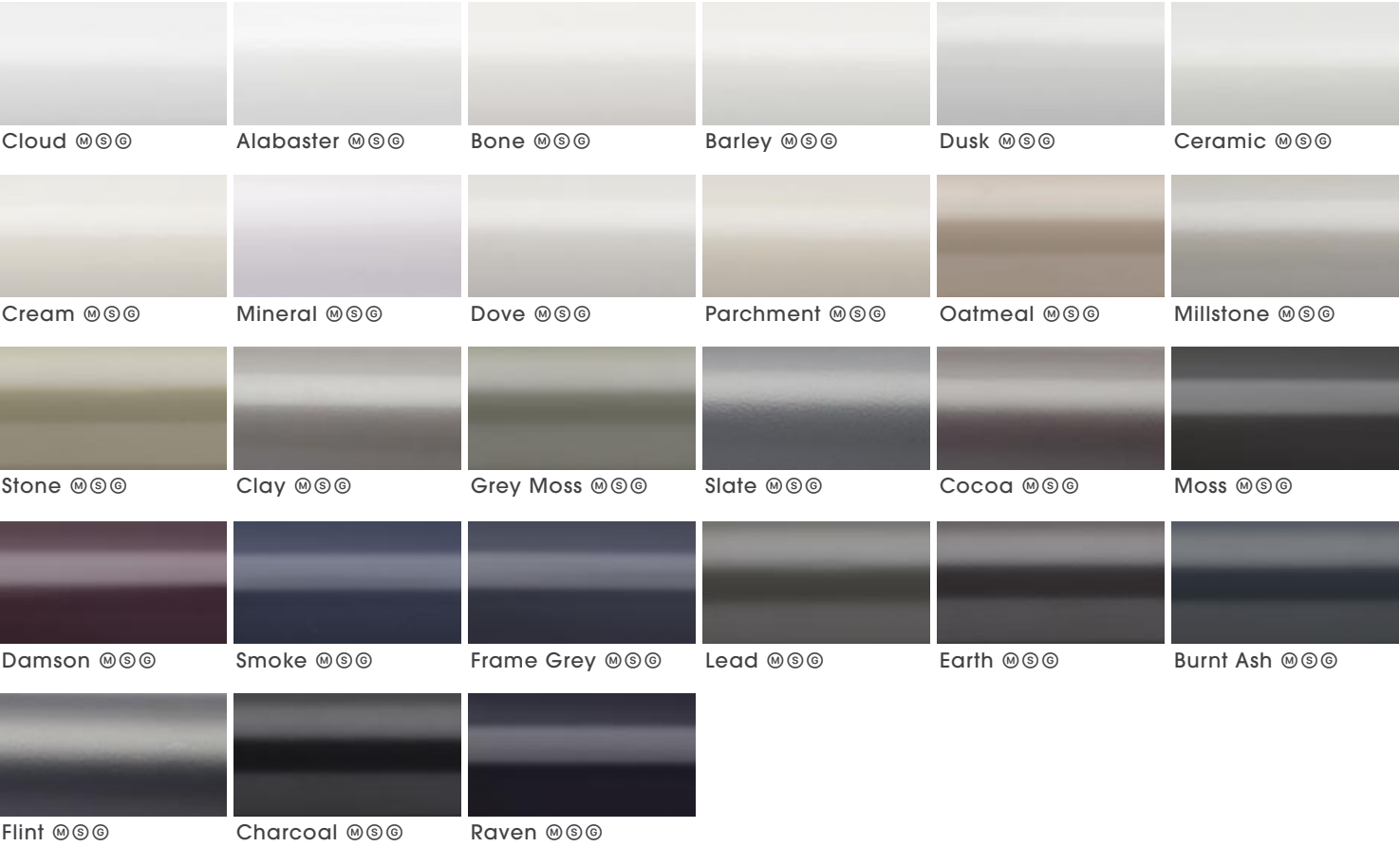


# FINISHES

This stunning palette of colours and finishes is available on all Gliderpoles and components, with a choice of coat options throughout.

## SHADES

A superb selection of opaque colours, all available in a choice of Matte, Satin or Gloss finish.



## METALLICS

High metallic fleck coatings with most available in Satin and Gloss sheen levels.



## ANODIC METALS

A flat metal colour group, with an anodised style surface texture.



## SPECIALIST FINISHES

Specialist techniques are employed to deliver additional finish choices. These more complex finishes are available at a premium cost and with longer lead times.

### BRIGHT / PLATED

Poles may be specified in bright aluminium finish, complemented by finials, brackets and accessories in Polished Nickel plate.



## FLUID METAL™

This innovative process involves applying authentic metal coatings to any substrate.

Elysian finial designs in particular lend themselves to these metal coats.



A finishing charge will apply | S Longer lead-times will apply | G Not available on Square or 50mm (2") poles  
Fluid Metal finishes are supplied unlacquered and will tarnish over time, a clear lacquer may be applied on request as a custom finish  
Fluid Metal finishes are hand produced, finish may vary.



# FINIALS

This design group focuses onto the clean, the elementary and the understated.

All finials are characterised by lightness, poise and simple lines.

**Pictured left to right:**  
Round ø50mm (2") Gliderpole® - Hand Drawn • Flush End Cap • Raven - Matte  
Round ø23mm (1<sup>5</sup>/<sub>16</sub>") Gliderpole® - Hand Drawn • Flush End Cap • Charcoal - Matte  
Round ø30mm (1<sup>3</sup>/<sub>16</sub>") Gliderpole® - Hand Drawn • Flush End Cap • Flint - Matte  
Square H27mm (1<sup>1</sup>/<sub>16</sub>") Gliderpole® - Hand Drawn • Flush End Cap • Lead - Matte  
Flat H36mm (1<sup>7</sup>/<sub>16</sub>") Gliderpole® - Hand Drawn • Flush End Cap • Burnt Ash - Matte



## Flush End Cap Supplied as standard

Square H27mm (1<sup>1</sup>/<sub>16</sub>") Inclusive Length 3mm (1<sup>1</sup>/<sub>8</sub>")  
Flat H36mm (1<sup>7</sup>/<sub>16</sub>") Inclusive Length 3mm (1<sup>1</sup>/<sub>8</sub>")  
Round ø23mm (1<sup>5</sup>/<sub>16</sub>") Inclusive Length 3mm (1<sup>1</sup>/<sub>8</sub>")  
Round ø30mm (1<sup>3</sup>/<sub>16</sub>") Inclusive Length 3mm (1<sup>1</sup>/<sub>8</sub>")  
Round ø50mm (2") Inclusive Length 3mm (1<sup>1</sup>/<sub>8</sub>")



## Flush Stud

Square H27mm (1<sup>1</sup>/<sub>16</sub>") Inclusive Length 12mm (1<sup>1</sup>/<sub>2</sub>")  
Flat H36mm (1<sup>7</sup>/<sub>16</sub>") Inclusive Length 12mm (1<sup>1</sup>/<sub>2</sub>")  
Round ø23mm (1<sup>5</sup>/<sub>16</sub>") Inclusive Length 10mm (3<sup>3</sup>/<sub>8</sub>")  
Round ø30mm (1<sup>3</sup>/<sub>16</sub>") Inclusive Length 12mm (1<sup>1</sup>/<sub>2</sub>")  
Round ø50mm (2") Inclusive Length 18mm (1<sup>1</sup>/<sub>16</sub>")



## Stud

Round ø23mm (1<sup>5</sup>/<sub>16</sub>") Inclusive Length 10mm (3<sup>3</sup>/<sub>8</sub>")  
Round ø30mm (1<sup>3</sup>/<sub>16</sub>") Inclusive Length 12mm (1<sup>1</sup>/<sub>2</sub>")  
Round ø50mm (2") Inclusive Length 18mm (1<sup>1</sup>/<sub>16</sub>")



## Disc

Round ø23mm (1<sup>5</sup>/<sub>16</sub>") Inclusive Length 10mm (3<sup>3</sup>/<sub>8</sub>")  
Round ø30mm (1<sup>3</sup>/<sub>16</sub>") Inclusive Length 12mm (1<sup>1</sup>/<sub>2</sub>")  
Round ø50mm (2") Inclusive Length 18mm (1<sup>1</sup>/<sub>16</sub>")



## Squat Disc

Round ø30mm (1<sup>3</sup>/<sub>16</sub>") Inclusive Length 32mm (1<sup>1</sup>/<sub>4</sub>")  
Round ø50mm (2") Inclusive Length 58mm (2<sup>5</sup>/<sub>16</sub>")



## Faceted Disc

Round ø30mm (1<sup>3</sup>/<sub>16</sub>") Inclusive Length 37mm (1<sup>1</sup>/<sub>2</sub>")  
Round ø50mm (2") Inclusive Length 69mm (2<sup>11</sup>/<sub>16</sub>")



## Pebble

Round ø30mm (1<sup>3</sup>/<sub>16</sub>") Inclusive Length 42mm (1<sup>5</sup>/<sub>8</sub>")  
Round ø50mm (2") Inclusive Length 68mm (2<sup>11</sup>/<sub>16</sub>")



## Ball

Round ø30mm (1<sup>3</sup>/<sub>16</sub>") Inclusive Length 66mm (2<sup>5</sup>/<sub>8</sub>")  
Round ø50mm (2") Inclusive Length 112mm (4<sup>7</sup>/<sub>8</sub>")

# FINIALS

This design edit allows Gliderpole to express a more glamorous, flamboyant side. Classical design cues have been re-interpreted to suit modern style sensitivity.

For even greater choice, finial designs from the Mio collection may also be specified.



**Pictured left to right:**  
Round  $\varnothing 50\text{mm}$  (2") Gliderpole® - Hand Drawn | Ribbed Globe • Bronze - Satin  
Discus • Antique Brass - Satin | Flute • Champagne - Satin | Templar • Platinum - Satin



Halo

$\varnothing 30\text{mm}$  (1 $\frac{3}{16}$ " ) Inclusive Length 5mm ( $\frac{3}{16}$ " )  
 $\varnothing 50\text{mm}$  (2" ) Inclusive Length 2mm ( $\frac{1}{16}$ " )



Aura

$\varnothing 30\text{mm}$  (1 $\frac{3}{16}$ " ) Inclusive Length 5mm ( $\frac{3}{16}$ " )  
 $\varnothing 50\text{mm}$  (2" ) Inclusive Length 2mm ( $\frac{1}{16}$ " )



Orbit

$\varnothing 30\text{mm}$  (1 $\frac{3}{16}$ " ) Inclusive Length 36mm (1 $\frac{7}{16}$ " )  
 $\varnothing 50\text{mm}$  (2" ) Inclusive Length 52mm (2 $\frac{1}{16}$ " )



Discus

$\varnothing 30\text{mm}$  (1 $\frac{3}{16}$ " ) Inclusive Length 39mm (1 $\frac{1}{2}$ " )  
 $\varnothing 50\text{mm}$  (2" ) Inclusive Length 58mm (2 $\frac{5}{16}$ " )



Jewel

$\varnothing 30\text{mm}$  (1 $\frac{3}{16}$ " ) Inclusive Length 37mm (1 $\frac{7}{16}$ " )  
 $\varnothing 50\text{mm}$  (2" ) Inclusive Length 55mm (2 $\frac{1}{8}$ " )



Flute

$\varnothing 30\text{mm}$  (1 $\frac{3}{16}$ " ) Inclusive Length 73mm (2 $\frac{7}{8}$ " )  
 $\varnothing 50\text{mm}$  (2" ) Inclusive Length 114mm (4 $\frac{1}{2}$ " )



Squat Globe

$\varnothing 30\text{mm}$  (1 $\frac{3}{16}$ " ) Inclusive Length 53mm (2 $\frac{1}{16}$ " )  
 $\varnothing 50\text{mm}$  (2" ) Inclusive Length 81mm (3 $\frac{3}{16}$ " )



Globe

$\varnothing 30\text{mm}$  (1 $\frac{3}{16}$ " ) Inclusive Length 73mm (2 $\frac{7}{8}$ " )  
 $\varnothing 50\text{mm}$  (2" ) Inclusive Length 114mm (4 $\frac{1}{2}$ " )



Ribbed Globe

$\varnothing 30\text{mm}$  (1 $\frac{3}{16}$ " ) Inclusive Length 73mm (2 $\frac{7}{8}$ " )  
 $\varnothing 50\text{mm}$  (2" ) Inclusive Length 114mm (4 $\frac{1}{2}$ " )



Charm

$\varnothing 30\text{mm}$  (1 $\frac{3}{16}$ " ) Inclusive Length 69mm (2 $\frac{1}{16}$ " )  
 $\varnothing 50\text{mm}$  (2" ) Inclusive Length 117mm (4 $\frac{1}{8}$ " )



Templar

$\varnothing 30\text{mm}$  (1 $\frac{3}{16}$ " ) Inclusive Length 79mm (3 $\frac{1}{8}$ " )  
 $\varnothing 50\text{mm}$  (2" ) Inclusive Length 119mm (4 $\frac{1}{16}$ " )





Crystal Templar\*



$\varnothing 50\text{mm}$  (2" ) Inclusive Length 119mm (4 $\frac{1}{16}$ " )


\*: Crystal Finials should not be positioned in direct sunlight  
For full technical information, sizes and weights please download the specification guide - [www.bradleycollection.com/specification-guides](http://www.bradleycollection.com/specification-guides)




# SINGLE BRACKETS

Side	Mid	Diameter	Projection from wall to pole centre	Side Fixing plate size	Mid Fixing plate size
		Square H27mm (1½")	60mm (2⅜"), 100mm (4")	w32mm (1¼") x H70mm (2¾")	w32mm (1¼") x H38mm (1½")
		Flat H36mm (1⅞")	60mm (2⅜"), 100mm (4")	w32mm (1¼") x H70mm (2¾")	w32mm (1¼") x H38mm (1½")
		Round Ø23mm (⅞")	60mm (2⅜"), 100mm (4")	w32mm (1¼") x H70mm (2¾")	w32mm (1¼") x H38mm (1½")
		Round Ø30mm (1⅓")	60mm (2⅜"), 100mm (4")	w32mm (1¼") x H70mm (2¾")	w32mm (1¼") x H38mm (1½")
		Round Ø50mm (2")	60mm (2⅜"), 100mm (4")	w32mm (1¼") x H70mm (2¾")	w32mm (1¼") x H38mm (1½")

Side Heavy Duty	Mid Heavy Duty	Diameter	Projection from wall to pole centre	Side Fixing plate size	Mid Fixing plate size
		Square H27mm (1½")	100mm (4"), 140mm (5½")	w47mm (1⅞") x H76mm (3")	w47mm (1⅞") x H36mm (1⅞")
		Flat H36mm (1⅞")	100mm (4"), 140mm (5½")	w47mm (1⅞") x H76mm (3")	w47mm (1⅞") x H36mm (1⅞")
		Round Ø23mm (⅞")	100mm (4"), 140mm (5½")	w47mm (1⅞") x H76mm (3")	w47mm (1⅞") x H36mm (1⅞")
		Round Ø30mm (1⅓")	100mm (4"), 140mm (5½")	w47mm (1⅞") x H76mm (3")	w47mm (1⅞") x H36mm (1⅞")
		Round Ø50mm (2")	100mm (4"), 140mm (5½")	w47mm (1⅞") x H76mm (3")	w47mm (1⅞") x H36mm (1⅞")

Flush Light Duty	Diameter	Drop from ceiling to top of pole	Fixing plate size
	Square H27mm (1½")	3mm (⅛")	w20mm (⅞") x L50mm (2")
	Flat H36mm (1⅞")	3mm (⅛")	w20mm (⅞") x L50mm (2")
	Round Ø23mm (⅞")	3mm (⅛")	w20mm (⅞") x L50mm (2")
	Round Ø30mm (1⅓")	3mm (⅛")	w20mm (⅞") x L50mm (2")

Flush Heavy Duty	Diameter	Drop from ceiling to top of pole	Fixing plate size
	Square H27mm (1½")	3mm (⅛")	w40mm (1⅙") x L59mm (2⅝")
	Flat H36mm (1⅞")	3mm (⅛")	w40mm (1⅙") x L59mm (2⅝")
	Round Ø23mm (⅞")	3mm (⅛")	w40mm (1⅙") x L59mm (2⅝")
	Round Ø30mm (1⅓")	3mm (⅛")	w40mm (1⅙") x L59mm (2⅝")
	Round Ø50mm (2")	3mm (⅛")	w40mm (1⅙") x L59mm (2⅝")



# RECESS BRACKETS

Recess with hook stop	Diameter	Depth off wall	Fixing plate size
	Square H27mm (1½")	14mm (⅝")	w42mm (1⅞") x H27mm (1⅞")
	Flat H36mm (1⅞")	14mm (⅝")	w31mm (1¼") x H36mm (1⅞")
	Round Ø23mm (⅞")	14mm (⅝")	w33mm (1⅝") x H24mm (1⅝")
	Round Ø30mm (1⅓")	14mm (⅝")	w40mm (1⅙") x H31mm (1¼")
	Round Ø50mm (2")	14mm (⅝")	w64mm (2½") x H51mm (2")



# EDGE BRACKET

End	Diameter	Projection from wall to pole centre	Fixing plate size
	Round Ø30mm (1⅓")	100mm (4")	w32mm (1¼") x H70mm (2¾")

# ADJUSTABLE BRACKETS

Side	Mid	Diameter	Projection from wall to pole centre	Side Fixing plate size	Mid Fixing plate size
		Square H27mm (1½")	Min.80mm (3⅛") Max.130mm (5⅞")	w47mm (1⅞") x H76mm (3")	w47mm (1⅞") x H36mm (1⅞")
		Flat H36mm (1⅞")	Min.80mm (3⅛") Max.130mm (5⅞")	w47mm (1⅞") x H76mm (3")	w47mm (1⅞") x H36mm (1⅞")
		Round Ø23mm (⅞")	Min.80mm (3⅛") Max.130mm (5⅞")	w47mm (1⅞") x H76mm (3")	w47mm (1⅞") x H36mm (1⅞")
		Round Ø30mm (1⅓")	Min.80mm (3⅛") Max.130mm (5⅞")	w47mm (1⅞") x H76mm (3")	w47mm (1⅞") x H36mm (1⅞")
		Round Ø50mm (2")	Min.80mm (3⅛") Max.130mm (5⅞")	w47mm (1⅞") x H76mm (3")	w47mm (1⅞") x H36mm (1⅞")

# DOUBLE BRACKETS

Side	Mid	Diameter	Projection from wall to pole centre	Side Fixing plate size	Mid Fixing plate size
		Square H27mm (1½")	F140mm (5½") B 40-60mm (1⅞-2⅜")	w47mm (1⅞") x H76mm (3")	w47mm (1⅞") x H36mm (1⅞")
		Flat H36mm (1⅞")	F140mm (5½") B 40-60mm (1⅞-2⅜")	w47mm (1⅞") x H76mm (3")	w47mm (1⅞") x H36mm (1⅞")
		Round Ø23mm (⅞")	F140mm (5½") B 40-60mm (1⅞-2⅜")	w47mm (1⅞") x H76mm (3")	w47mm (1⅞") x H36mm (1⅞")
		Round Ø30mm (1⅓")	F140mm (5½") B 40-60mm (1⅞-2⅜")	w47mm (1⅞") x H76mm (3")	w47mm (1⅞") x H36mm (1⅞")
		Round Ø50mm (2")	F140mm (5½") B 40-60mm (1⅞-2⅜")	w47mm (1⅞") x H76mm (3")	w47mm (1⅞") x H36mm (1⅞")

# CUSTOM BRACKETS

A bespoke design service is offered to ensure solutions in even the most challenging installations.

				
<b>Custom Projection</b> Specify the exact projection needed.	<b>Custom Fixing Plate</b> Relevant where space is restricted or weight is a concern.	<b>Uplift</b> Helps negotiate cornice and similar architectural features.	<b>Ceiling Brackets</b> Specify exact projection required from ceiling.	<b>Angled Brackets</b> The solution for tight and awkward locations.



# GLIDING OPTIONS

2C Gliders	Wave® 2C Gliders	RollersⓈ	Wave® RollersⓈ
<b>Drop from bottom of track:</b> 8mm (5/16")	<b>Drop from bottom of track:</b> 8mm (5/16")	<b>Drop from bottom of track:</b> 8mm (5/16")	<b>Drop from bottom of track:</b> 27mm (1 1/16")
<b>Colour Options:</b> White • Black	<b>Wave® Pitch:</b> 60mm (2 3/8") • 80mm (3 1/8") <b>Colour Options:</b> White • Black	<b>Colour Options:</b> White	<b>Wave® Pitch:</b> 80mm (3 1/8") <b>Colour Options:</b> White

# POLES

Poles are cut, bent and curved to suit individual requirements. When calculating the length of your pole, remember to allow tolerance beyond the width of the frame for the curtains to stack back to the edge of the window.

Maximum pole length in one piece 4.0m (157").Ⓢ

Poles exceeding the maximum length will be cut into equal parts unless otherwise specified. A pole joiner will be supplied.

Twin cord systems are always supplied in an even number of parts & will be supplied in a minimum of two sections.

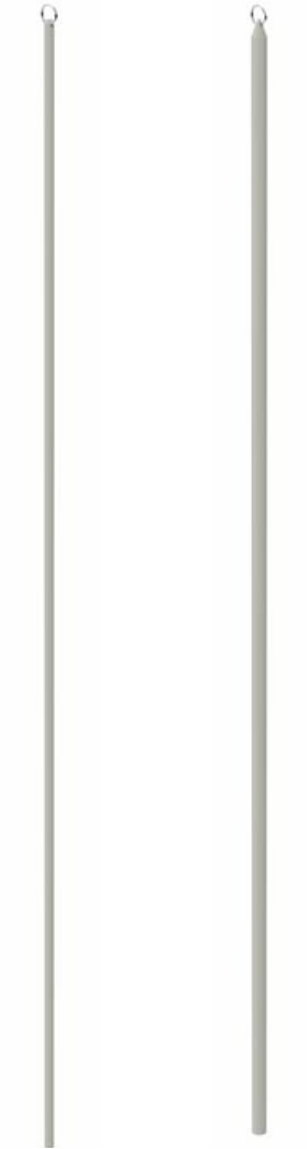
Size	Control Type	Maximum distance between brackets	Minimum bend radius
Square H27mm (1 1/16")	Hand Drawn	1000mm (39")	Ⓢ300mm (12")
Flat H36mm (1 7/16")	Corded	1000mm (39")	n/a
Round Ⓢ23mm (1 5/16")	Hand Drawn	1000mm (39")	Ⓢ200mm (8")
Round Ⓢ30mm (1 3/16")	Hand Drawn	1000mm (39")	Ⓢ150mm (6")
	Corded	1000mm (39")	Ⓢ300mm (12")
Round Ⓢ50mm (2")	Hand Drawn	1000mm (39")	Ⓢ300mm (12")
	Corded	1000mm (39")	Ⓢ600mm (24")
		1000mm (39")	Ⓢ670mm (26")

# ACCESSORIES

## Draw Rods

Fine

Standard



**Draw rod length:**  
1000mm (39 3/8")  
Custom lengths available to order

## Cord Retainer



All corded tracks are supplied as standard with a metal cord retainer. This ensures that all cords are safely secured to the wall and complies with **BS EN 13120:2009+A12014**.

This will be supplied in the same finish as the system, unless advised otherwise.



**Fixing plate size:**  
Ⓢ46mm (1 13/16")  
**Cord Colour Options:**  
White • Black

Ⓢ Supplied in sections - Section lengths over 3.0m (118") will incur a handling charge Ⓢ Supplied as standard on systems over 3.0m (10ft) with single stack curtains  
For full technical information, sizes and weights please download the specification guide - [www.bradleycollection.com/specification-guides/](http://www.bradleycollection.com/specification-guides/)