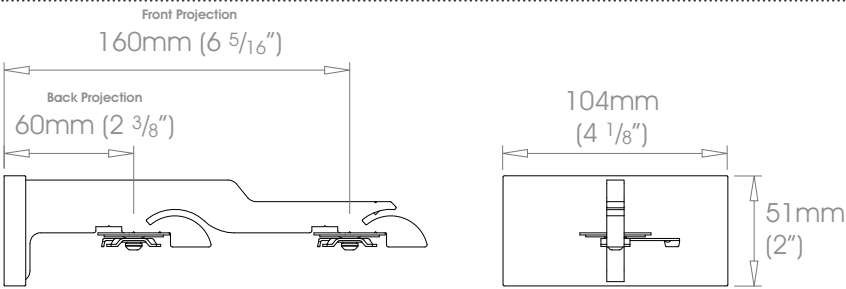




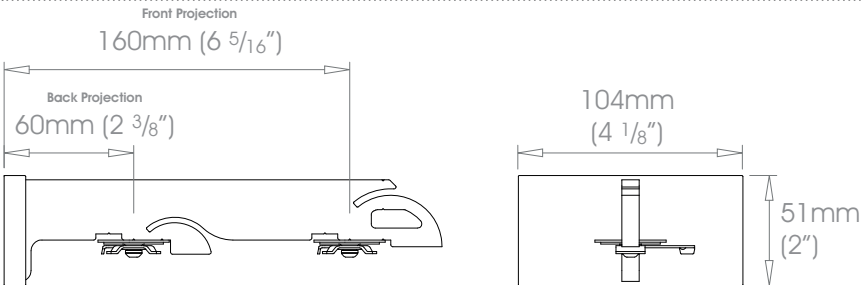
⚠ Brackets will be supplied with the relevant track fixing, which may differ to those shown in the diagrams

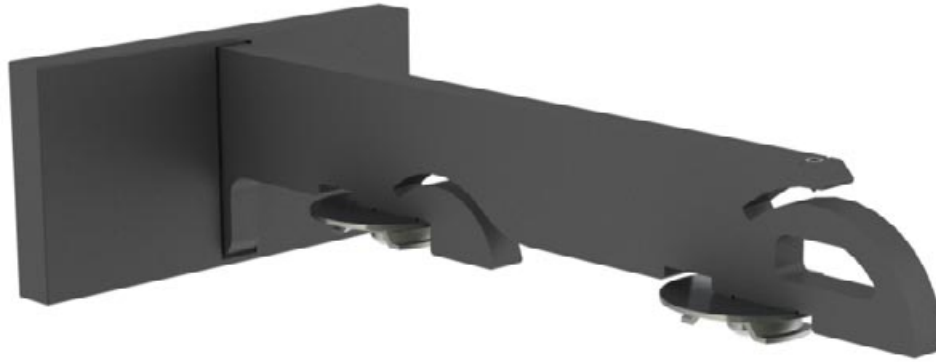
FINISHES Coat Options Matte Satin Gloss	Stainless Shades	Brushed Stainless Cloud • Alabaster • Bone • Barley • Dusk • Ceramic • Cream • Mineral • Dove • Parchment • Oatmeal • Millstone • Stone • Clay • Grey Moss Slate • Cocoa • Moss • Damson • Smoke • Frame Grey • Lead • Earth • Burnt Ash • Flint • Charcoal • Raven
	Metallics Anodic Metals	Platinum • Champagne • Gold • Cognac • Antique Brass • Gunmetal • Pewter • Bronzed Twilight • Glow • Sky • Sunrise • Storm • Glimmer • Sunset • Night Sky • Midnight
	Specialist	Can be specified at twice the cost of the standard finish - Brushed Brass Tint • Brushed Bronze Tint • Brushed Carbon Tint Can be specified at twice the cost of the standard finish plus a custom fee - Old Brass • Light Bronze • Bronze Art See Specification Guide for details
	Custom	

Front 38mm (1 1/2") - Back 38mm (1 1/2")



Front 50mm (2") - Back 38mm (1 1/2")

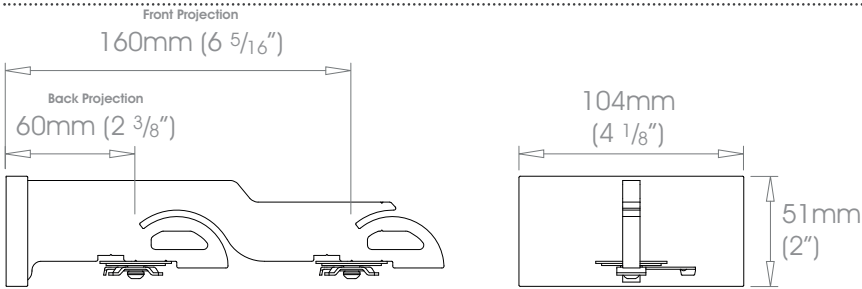


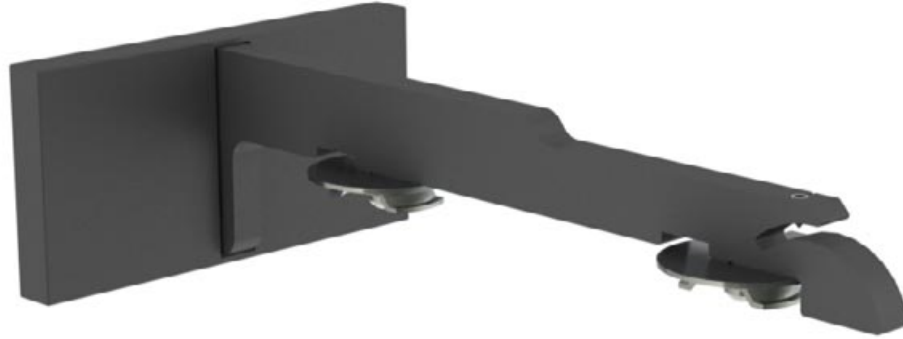


⚠ Brackets will be supplied with the relevant track fixing, which may differ to those shown in the diagrams

FINISHES Coat Options Matte ⊕ Satin ⊕ Gloss ⊕	Stainless Shades ⊕⊕⊕	Brushed Stainless Cloud • Alabaster • Bone • Barley • Dusk • Ceramic • Cream • Mineral • Dove • Parchment • Oatmeal • Millstone • Stone • Clay • Grey Moss Slate • Cocoa • Moss • Damson • Smoke • Frame Grey • Lead • Earth • Burnt Ash • Flint • Charcoal • Raven
	Metallics ⊕⊕	Platinum • Champagne • Gold • Cognac • Antique Brass • Gunmetal • Pewter • Bronzed
	Anodic Metals	Twilight • Glow • Sky • Sunrise • Storm • Glimmer • Sunset • Night Sky • Midnight
	Specialist	Can be specified at twice the cost of the standard finish - Brushed Brass Tint • Brushed Bronze Tint • Brushed Carbon Tint Can be specified at twice the cost of the standard finish plus a custom fee - Old Brass • Light Bronze • Bronze Art See Specification Guide for details
	Custom	See Specification Guide for details

Front 50mm (2") - Back 50mm (2")

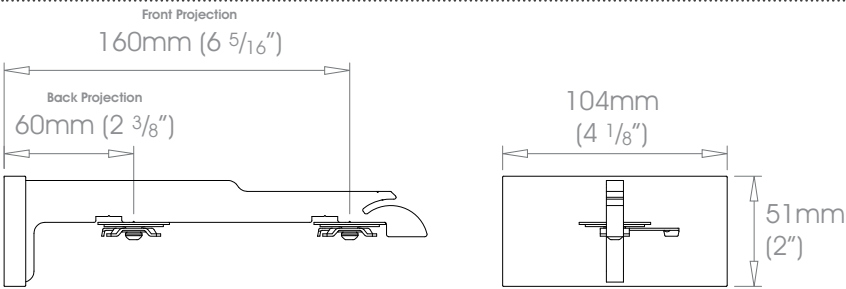




⚠ Brackets will be supplied with the relevant track fixing, which may differ to those shown in the diagrams

FINISHES Coat Options Matte Satin Gloss	Stainless Brushed Stainless	Cloud • Alabaster • Bone • Barley • Dusk • Ceramic • Cream • Mineral • Dove • Parchment • Oatmeal • Millstone • Stone • Clay • Grey Moss
	Shades	Slate • Cocoa • Moss • Damson • Smoke • Frame Grey • Lead • Earth • Burnt Ash • Flint • Charcoal • Raven
	Metallics	Platinum • Champagne • Gold • Cognac • Antique Brass • Gunmetal • Pewter • Bronzed
	Anodic Metals	Twilight • Glow • Sky • Sunrise • Storm • Glimmer • Sunset • Night Sky • Midnight
	Specialist	Can be specified at twice the cost of the standard finish - Brushed Brass Tint • Brushed Bronze Tint • Brushed Carbon Tint Can be specified at twice the cost of the standard finish plus a custom fee - Old Brass • Light Bronze • Bronze Art See Specification Guide for details
Custom		

Front 38mm (1 1/2") - Back Uncovered



Front 50mm (2") - Back Uncovered

