

**CUSTOMER INFORMATION**

Company Name



**PROJECT INFORMATION**

Project Name

Room

Contact

PO

**1 DIAMETER**

- $\varnothing 38\text{mm}$  (1 1/2")
    $\varnothing 30\text{mm}$  (1 3/16") Glide
    $\varnothing 38\text{mm}$  (1 1/2") Glide

**2 SYSTEM TYPE, CONTROLS & GLIDING OPTIONS**

Drive is available with three motorised track options, Fill out the relevant section below

**LUTRON**

**Lutron**

**A Electric Motor / Manual**

- ⚡ D105
  ⚡ D145
  ⚡ D175
  Hand Drawn

**B Motor Location**

- Left
  Right

**C Power Options**

- Transformer

**D Control Option**

- Radio Dongle
  Pico Remote
  App Control RA2 Select
  Home Automation

**somfy**

**Somfy**

**A Electric Motor / Manual**

- ⚡ Movelite 35 WT
  ⚡ Movelite 35 RTS
  ⚡ Movelite 35 WF RTS
  ⚡ Glydea Ultra 60e WT
  ⚡ Glydea Ultra 60e RTS
  ⚡ Irismo 45 WF RTS
  Hand Drawn

**B Motor Location**

- Left
  Right

**C Power Options**

- ⚡ Movelite Power Adapter
  ⚡ Irismo Power Adapter

**D Control Option**

- Situo 1 RTS Remote
  Situo 5 RTS Remote
  Zigbee Module
  Ysia 1 Zigbee Remote
  Ysia 5 Zigbee Remote
  App Control Tahoma
  Home Automation

**SilentGliss**

**Silent Gliss 5600**

**A Electric Motor / Manual**

- ⚡ 9060 Motor - Silver
  ⚡ 9060 Motor - White
  ⚡ 9060 Motor - Black
  Hand Drawn

**B Motor Location**

- Left
  Right

**C Control Option**

- 9063 Radio Module
  11931 Control N Remote
  11932 Control N Remote
  App Control Move
  Home Automation

**PLEASE TURN OVER**

**CUSTOMER INFORMATION**

Company Name \_\_\_\_\_



**PROJECT INFORMATION**

Project Name \_\_\_\_\_

Room \_\_\_\_\_

Contact \_\_\_\_\_

PO \_\_\_\_\_

**3 FINISHES**

- Shades \_\_\_\_\_ Coat Options  Matte <sup>M</sup>  Satin <sup>S</sup>  Gloss <sup>G</sup>
- Metallics \_\_\_\_\_ Coat Options  Satin <sup>S</sup>  Gloss <sup>G</sup>
- Anodics \_\_\_\_\_
- Organics \_\_\_\_\_
- Ceramics \_\_\_\_\_
- Chromatics \_\_\_\_\_

**4 FINIALS**

- Seamless   Orbic   Orbic Grand   Drum   Tulip   Oblique
- Planar   Ellipse   Spheric

**5 BRACKETS**

**Single Brackets**

- Side Qty \_\_\_\_\_
- Mid Qty \_\_\_\_\_

**Ceiling Brackets**

- Partition Qty \_\_\_\_\_

**Recess Brackets**

- Recess Qty \_\_\_\_\_

**6 MEASUREMENT**



- Straight Pole A-B \_\_\_\_\_

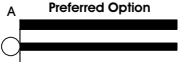
- Bay Pole

**7 POLE INFORMATION**

**A Finial Location**

Please specify if your measurements exclude or include the finial length.

- Excludes Finial Length



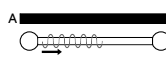
- Includes Finial Length



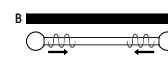
**C Gliding Option**

Please specify how the curtain will be stacked.

- Single Stack



- Pair Stack



- Glider
- Roller
- Metalcoat Roller
- Sine Glider
- Sine Roller
- Sine Metalcoat Roller
- Metalcoat Ripplefold Roller
- Metalcoat Selfcolour
- Other \_\_\_\_\_
- Ring
- Sine Ring

**8 CURTAIN INFORMATION**

**A Curtain Weight**

Total Weight \_\_\_\_\_

**B Heading**

- Standard
- Sine 60mm / 80mm
- Ripplefold 80% / 100% / 120%

**Gliding Option**

Curtain Drop \_\_\_\_\_

**Fabric**

- Light (Cotton)
- Medium (Linen)
- Heavy (Velvet)

**Lining**

- None
- Lined
- Interlined

**9 DECLARATION**

I confirm the given information & measurements are correct and on this basis wish to proceed with a Quote/Order

SIGNED \_\_\_\_\_ DATE \_\_\_\_\_