

CUSTOMER INFORMATION

Company Name



PROJECT INFORMATION

Project Name

Room

Contact

PO

1 SYSTEM TYPE, CONTROLS & GLIDING OPTIONS

LUTRON

A Electric Motor / Manual

- ⚡ D105 ⚡ D145 ⚡ D175 Hand Drawn

B Motor Location

- Left Right

C Power Options

- Transformer

D Control Option

- Radio Dongle Pico Remote App Control RA2 Select Home Automation

E Gliding Options

- Roller S-Fold® Roller - 60mm/80mm Ripplefold® Roller - 80%/100%/120%

somfy

A Electric Motor / Manual

- ⚡ Movelite 35 WT ⚡ Movelite 35 DTC ⚡ Movelite 35 RTS ⚡ Movelite 35 WF RTS Hand Drawn
 ⚡ Glydea Ultra 60e WT ⚡ Glydea Ultra 60e RTS ⚡ Irismo 45 WF RTS

B Motor Location

- Left Right

C Power Options

- ⚡ Movelite Power Adapter ⚡ Irismo Power Adapter

D Control Option

- Situo 1 RTS Remote Situo 5 RTS Remote Zigbee Module Ysia 1 Zigbee Remote Ysia 5 Zigbee Remote
 App Control tahoma Home Automation

E Gliding Options

- Roller Ripple Roller - 80mm Ripplefold® Roller - 80%/100%/120%
 White Black White Black

SilentGliss

A Electric Motor / Manual

- ⚡ 9060 Motor - Silver ⚡ 9060 Motor - White ⚡ 9060 Motor - Black Hand Drawn

B Motor Location

- Left Right

C Control Option

- 9063 Radio Module 11931 Control N Remote 11932 Control N Remote App Control Move Home Automation

D Gliding Options

- Glider Roller Wave® Glider - 60mm/80mm Wave® Roller - 60mm/80mm
 White Black White Black

CRESTRON

A Electric Motor / Manual

- ⚡ D105 ⚡ D145 Hand Drawn

B Motor Location

- Left Right

C Gliding Options

- Roller Ripple Roller - 60mm/80mm Ripplefold® Roller - 60mm/80mm

CUSTOMER INFORMATION

Company Name _____



PROJECT INFORMATION

Project Name _____

Room _____

Contact _____

PO _____

2 DIAMETER

ø38mm (1 1/2")

ø50mm (2")

3 FINISHES

- Carbon Steel _____
- 304 Stainless _____
- Authentic Brass _____
- Solid Wood _____
- Other _____

4 FINIALS

- Flush End Cap
- Contrast Stud
- Standard Stud
- Large Disc
- Button Stud
- Faceted Disc
- Ball & Collar
- Ball

5 BRACKETS

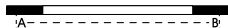
Single Brackets

- Side Qty _____
- Mid Qty _____
- Joining Qty _____
- 100mm (4") Projection
- Custom _____

Ceiling Brackets

- Flush Qty _____
- Flush - Joining Qty _____
- Projection from wall _____

6 MEASUREMENT



Straight Pole A-B _____

Bay Pole

7 POLE INFORMATION

A Finial Location

Please specify if your measurements exclude or include the finial length.

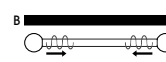
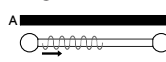
- Excludes Finial Length
- Includes Finial Length



B Stacking Location

Please specify how the curtain will be stacked.

- Single Stack
- Pair Stack



8 CURTAIN INFORMATION

A Curtain Weight

Total Weight _____

B Heading

- Standard
- Wave/Ripple/Ripplefold

Gliding Option

Curtain Drop _____

Fabric

- Light (Cotton)
- Medium (Linen)
- Heavy (Velvet)

Lining

- None
- Lined
- Interlined

9 DECLARATION

I confirm the given information & measurements are correct and on this basis wish to proceed with a Quote/Order

SIGNED _____ DATE _____